



## JEWISH GENEALOGICAL AND ARCHIVAL SOCIETY OF GREATER PHILADELPHIA

**February 11, 2024**

MARILYN GOLDEN VP  
membership@jgasgp.org



**Thanks to everyone for sending in their payments. We have over 300 current members!**

**THANK YOU...THANK YOU...THANK YOU.**

**Adina Newman spoke to us about “Incorporating Social Media into Your Genealogical Research”.**

Social media has become an essential tool for genealogists in the 21st century. Through platforms like Facebook, X, Instagram, LinkedIn, and TikTok, genealogists have limitless opportunities for expanding research, learning new skills, and collaborating with other researchers. Have you ever heard of Threads? Threads now has hashtags that are searchable. You can watch the recording and see the handout. It was e-mailed to everyone, and Jim will post it on our website.

We had a lively Q and A. One of our members, Emilie, shared information about the archives in Belgium: [Rijksarchief@arch.be](mailto:Rijksarchief@arch.be) (e-mail)

ARCHIVES GENERALES DU ROYAUME ET ARCHIVES DE L'etet dans les provinces. Here is the complete phone number she used to contact them: 011 32 2 513 76 80.

## Announcement: Recording of meetings!

**Adina's** lecture has been recorded and will be available for 6 months. Look for her on social media sites and her website. She can be reached at: [www.myfamilygenie.com](http://www.myfamilygenie.com), [Adina@myfamilygenie.com](mailto:Adina@myfamilygenie.com) and on the various social media sites on the top of her handout.

Watch the video and you will learn new ways to search for information!  
<https://us02web.zoom.us/rec/share/9LhY12yzwFFQ2HfWGFvBN0WjVIUE-X6OqXtMJ-mez2UOJMN42E4quK60Mm5AQ8qWW.EdWHxXYSzZ4RPwzN?startTime=1707664379000>  
Passcode: KM^!Ze5R

## Beginner's Corner and Research Tips

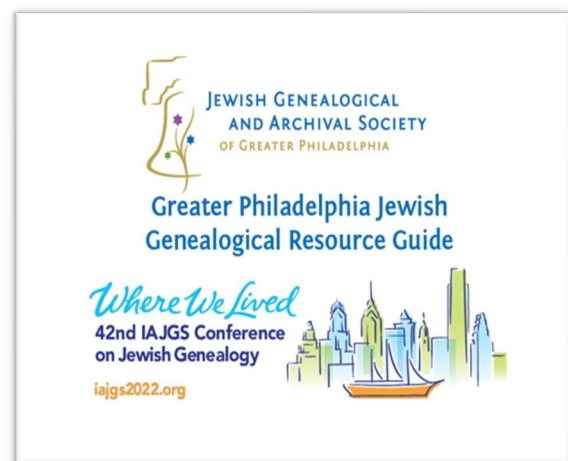


*Make sure you dig a little deeper and re-view the documents to check the facts before adding information to your family tree!*

Search the On-demand library of RootsTech to watch great videos for Jewish researchers!

**Two great resources are available on our website for members:**

(Sign in and look under the Resources Tab)



## BOOK CLUB UPDATE



The link will be sent out to all on the morning of each meeting. See our website under Events for updated Book Club titles and descriptions. All members are welcome to join us.

Please join us for our next meeting on Wednesday, February 28<sup>th</sup> at 7:30 pm.

**The Dressmakers of Auschwitz** by Lucy Adlington. Wednesday, February 28, 2024, 7:30 pm.

Books are available in the public library, and on Amazon, eBay, etc. Check our website for the comprehensive list of future book club titles.

All are welcome to attend.

## CHRONICLES

### ***Chronicles* is seeking a new editor.**

If you have writing and/or editing experience, this might be up your alley.

Enjoy the process of being the first to read fascinating, new stories by our members and help refine and craft them for publication. You'll have the opportunity to continue to build on ***Chronicles' legacy*** as a publication that has been informing and instructing JGASGP members about genealogy, and reporting our members' joys and challenges as they travel their research journeys.

Current editor, Evan Fishman, will be available to train and mentor.



Please submit your well-thought-out and organized stories to Evan Fishman,

[editor@jgasgp.org](mailto:editor@jgasgp.org).

*Please let us know that you have something in the works.*

*Before submitting your article, have someone else read what you wrote to ensure clarity.*

**The latest electronic version has been e-mailed. Hard copies have been mailed.**

*Chronicles is posted on our website. Contact Jim, [webmaster@jgasgp.org](mailto:webmaster@jgasgp.org) for any questions about receiving your hard copy. Jim has posted all issues of Chronicles dating back to 1982 (Vol 1 # 1). Hard copies will be mailed out in about a week.*

## CONTRIBUTIONS

*We would like to thank members who have made generous donations to our society. Your continued kindness is greatly appreciated. Please let us know if you want to send a donation **in honor of**, or **in memory of** someone special. IAJGS Conference donations are welcome. Earmark your donation for 2024 Conference.*

## FROM THE PRESEIDENT' S DESK

DEAR JGASGP MEMEBERS,

*From the President's Desk*

*It is with great pride and joy that I share the news that the JGASGP Har Jehuda cemetery digitization project is nearing completion. During the summer of 2022, Marilyn Golden and I met with Larry Moskowitz, whose family has operated Har Jehuda for decades. Given the sheer number and age of these burials, it appeared to be a daunting task to extract all the information from thousands of index cards and somehow make the information available through our website.*

*But never say never!*

*Thanks to Marilyn's outstanding leadership spearheading this project, and the*

*amazing work of her team of dedicated volunteers, this massive cemetery's records will have a permanent home on both our website and JewishGen's Online Worldwide Burial site.*

*This is all happening in time for our long awaited IAJGS conference that we will be hosting here in Philadelphia in August! A detailed article by Helene Rosenfeldt about the actual digitization process of over 26,000 burials appeared in our most recent issue of Chronicles. If you have not yet read it, please do!*

*Kudos to our extraordinary team of JGASGP volunteers who have worked for months on this database. You are amazing. We couldn't have done this without you all. Thank you!*

**\*Coordinators:**

Marilyn Golden

Karen Albert

Alan Kaminsky

Helene Rosenfeldt

**Volunteers:**

Jeffrey Albert

Elisa Avery

Lori Barnett

Juliana Berland

Chana Bonn

Cindy Charlton

Arlene Cochran

Andi Coren

Sybil Csigi

Rena Dirckx  
Al First  
Alene Franklin  
Phil Keating  
Robert Kitchenoff  
Dodi Klimoff  
Lisa Kolker  
Leslie Morris Smith  
Xandra O'Neill  
Joanne Pekter  
Murray Rosenberg  
Lori Sandoval  
Roberta Sands  
Elisa Seeherman  
Donna Silverman  
Walter Spector  
Andi Sporkin  
John Spritz  
David Steinberg  
Lisa Steinberg  
Craig Taylor  
Barry Wagner  
Fran Solow Weinberger  
Alicia Weiss  
Margie Wellerstein

*I look forward to seeing you all at our upcoming meetings!*

*Felicia Mode Alexander*

*President, JGASGP*

*I want to add my grateful appreciation. Kathy Phillips and Larry Moskowitz have been extremely helpful. But it's really **Karen Albert, Alan Kaminsky, and Helene Rosenfeldt** who are fabulous and deserve lots of kudos! Without their organizational skills and collaboration, this project would not have gotten off the ground! Marilyn*

## JGASGP MEETING SCHEDULE

***The Zoom link will be sent out to members by Friday and posted on the HOME page of our website on Sunday prior to each meeting.***



Most of our programs will be recorded with the permission of the guest lecturer. **If anyone does not wish to be recorded, please do not participate in the live program.** All microphones and cameras will be turned off during the lecture but may be turned on during the Q and A. Thank you for your cooperation!

**Date: Sunday, March 10, 2024.**

**Time: 1:00 check in, chat, and schmooze  
1:30 pm Est official start time on zoom**

**Zoom Meeting link** will be sent out to members on Friday before the meetings. Link will be posted on our website on Sunday morning.



**Speaker:** **Alex Calzareth**, Board Member of Jewish Genealogy Society of Long Island and the JewishGen Research Director for Germany

**Alex Calzareth** is a genealogist focusing on Southwest Germany, the Czech Republic and Southern Italy who began researching his family roots twenty-five years ago. He is a board member for Reclaim The Records and the Jewish Genealogy Society of Long Island. Alex is also the JewishGen Research Director for Germany. He's a CPA and lives in New York City.

**Topic:** **Mapping Your Family History: How to Create a Customized Google Map**

Create maps with your own data on Google Maps. This presentation will teach you how to create a custom map, import location data associated with family history events or source records and then customize the appearance of that data on the map. Custom maps can be used in many ways, including visually conveying family migration patterns, showing the location of regional cemeteries, and which towns hold certain vital records. Resulting maps can also be imported into Google Earth for additional functionality.



**Date: Sunday, April 7, 2024.**

**Time: 1:00 check in, chat, and schmooze**  
**1:30 pm Est official start time on zoom and**  
**in person. Hybrid Meeting – In Person Venue TBD**

**Speaker:** Matt Weismantel, Professional Genealogist and Ellis Island Volunteer

Matt has been fascinated by history for as long as he can remember and has had a passion for genealogy for the past 35 years. As an adoptee himself, he fully appreciates the importance of uncovering one's roots. Matt's academic background in historical geography has been invaluable in supporting his genealogical interests, and he has graduated from ProGen 47 and multiple genealogical institutes.

Matt has served in various leadership positions, including as the secretary of the New Jersey Chapter of the Association of Professional Genealogists (APG), is currently the organization delegate for the Rogue Valley Genealogical Society (Oregon) and is serving as the Vice-Chair of the Delegates Council of the National Genealogical Society. He is also an active member of the New York Metro and Greater Philadelphia Chapters of the APG and several other local genealogical societies. Matt's work has been published in numerous local and state genealogical journals.

Since retiring in 2019 from his role at Rutgers University, Matt has dedicated his time to volunteering at the Statue of Liberty and Ellis Island National Monument at the American Family Immigration History Center and the Ellis Island Research Library, where he enjoys helping people discover their family histories. Matt helps organize and improve access to materials on the library's history of Ellis Island and the Statue of Liberty.

**Topic:** Ellis Island: Its History and Its Documents

Ellis Island served as the main entry point for millions of immigrants to the United States, with its peak years between 1892 and 1924. This



presentation places Ellis Island within the context of US immigration history, debunking some long-standing urban legends. It considers the documents generated as part of the immigration process, including how to find them and what information they include. Additionally, it looks at Ellis Island's recent story, from its abandonment and partial restoration, and reflects on the conflicting yet critical immigration story in our nation's long history.

SEE ADDITIONAL WINTER EVENTS ON OUR WEBSITE! CHECK OFTEN. NEW LECTURES WILL BE ADDED MONTHLY.

## Har Jehuda Cemetery Digitization Project Update:



We have almost completed our digitization project. I am so grateful to all our wonderful volunteers. We couldn't have done this without you!

I will announce when the list is completed and posted on our website!

### Mentors

**Alicia Weiss** and **Beth Steiner** have joined our JGASGP Mentor Team! If you need a mentor, let me know!



TAKE A LOOK ON OUR WEBSITE'S FAMILY FINDER.

HAVE YOU MADE ANY CONNECTIONS? WE'D LOVE TO HEAR ABOUT IT! NEW MEMBERS NEED TO FILL OUT THE MEMBERSHIP FORM AND SEND IT IN TO BE INCLUDED.

## HAMEC



Holocaust Awareness Museum and Education Center  
Preserving History to Learn From the Past | Est. 1961

<https://mobile.hamec.yourcultureconnect.com/experiences>

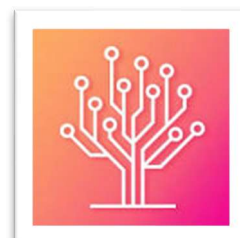
## IN THE NEWS



### RootsTech 2024

Thu, Feb 29, 2024 – Sun, Mar 3, 2024

RootsTech 2024 will be a **free virtual event** and an in-person event. In 2024, you will still be able to join virtually from anywhere in the world or you can attend with us live at the Salt Palace in Salt Lake City February 29–March 2, 2024.



**Registration is open now for this free conference!**

**FREQUENTLY ASKED QUESTIONS • ROOTSTECH - FAMILYSEARCH**

# IAJGS CONFERENCE 2024

Fred Blum and Felicia Mode Alexander

are

Local Co-Chairs of the conference.

Stay tuned for more information

about

volunteer opportunities!

We are going to count on your help to make our IN-PERSON  
conference a huge success!



## WHAT IS IAJGS?

The **International Association of Jewish Genealogical Societies (IAJGS)** is an organization of organizations formed in 1988 to provide a common voice for issues of significance to its members, to advance our genealogical avocation, and to coordinate items such as the annual [International Conference on Jewish Genealogy](#).

Most local and national Jewish Genealogical Societies (JGSs) and several Jewish genealogical Special Interest Groups (SIGs) and historical societies are members.

The purposes and objectives of the IAJGS are well outlined in its [bylaws](#).

### [Future Conferences](#)

2024, August 18 - 22	Philadelphia, PA	IAJGS and JGASGP	
2025, August 10 - 14	Fort Wayne, IN	IAJGS and Northeast Indiana JGS	

**WE ARE NOW LOOKING FOR EXHIBITORS  
FOR THE CONFERENCE**

**ARE YOU A **VENDOR** OR KNOW OF SOMEONE WHO  
IS INTERESTED? PLEASE SHARE THE  
FLYER. PLEASE CONTACT ME FOR ANY ADDI-  
TIONAL INFORMATION. WE ARE CURRENTLY  
WORKING OUT A TIMELINE FOR SET UP, ETC.**

**VOLUNTEERS WILL BE NEEDED FOR A  
VARIETY OF TASKS. I WILL BE ADVERTIS-  
ING THAT IN A SEPARATE E-MAIL.**

**ALL ONSITE VOLUNTEERS MUST BE PAID  
ATTENDEES AT THE CONFERENCE.**

# Where We Lived

## 44th IAJGS Conference on Jewish Genealogy

Philadelphia  
Aug 18-22, 2024

Fred Blum  
Lead Chair  
[fred@brservices.com](mailto:fred@brservices.com)

Felicia Mode Alexander  
Local Co-chair  
[president@jgasgp.org](mailto:president@jgasgp.org)

[iajgs2024.org](http://iajgs2024.org)

Dear Vendor,

We are in the planning stages for the 44th annual International Association of Jewish Genealogical Societies Conference being held in Philadelphia August 18th-22nd, 2024. It is being held at the Sheraton Hotel, 201 N 17th St, Philadelphia, PA 19103.

One of the highlights of the conference is the Exhibit Hall where attendees can learn of the latest products, services, or resources helpful to anyone pursuing genealogical of family history research. We are currently seeking vendors to display and/or sell genealogical products. These may include genealogy societies, synagogue gift shops, Jewish bookstores, Jewish authors with stories related to their genealogical research, etc. Any relevant form of Judaica will be welcome. Artwork and jewelry, items with family trees and/or DNA is always popular at the IAJGS conferences too!

Arrangements are preliminary (exact times, size of the tables, electronic needs, etc.), and more details will be announced in the coming weeks. The price for reserving a table will be \$325. To ensure you have up to date information and where to send your payment, send me your contact information via email. Type the word *Exhibit Hall* in the email subject line and provide your name/company, business address, phone number and email address.

Marilyn Golden, Vice President for Membership  
Jewish Genealogical and Archival Society of Greater Philadelphia  
[membership@jgasgp.org](mailto:membership@jgasgp.org)





## MEMBERSHIP AND SOCIETY NEWS

**Thank you to everyone who has paid their membership dues!**

***\*MAKE SURE YOU REGISTER ON OUR WEBSITE!  
It is NOT automatic because you are a JGASGP member.***

***Only paid-up members have access to all areas of our website, JGASGP Newsletters, Chronicles, and meeting notices. Members have access to our members only portal. Tell your friends!***

***Contact Marilyn (me) ([membership@jgasgp.org](mailto:membership@jgasgp.org)) if you have any dues related questions.***

***Contact Jim ([webmaster@jgasgp.org](mailto:webmaster@jgasgp.org)) with web access questions or receiving hard copy problems.***

***Contact Evan ([editor@jgasgp.org](mailto:editor@jgasgp.org)) with Chronicles article questions.***

***Our new fiscal year will run from January 1st - December 31st, 2024.  
Our 2024 membership form is on our website. \$10 extra for printed Chronicles.***

## Webinars, Conferences, Podcasts, and Meetings of Interest



\*\*\*\*\*



### Upcoming Monthly Zoom Programs hosted by Bucks County Genealogical Society 10:00 a.m. • \$5 Members • \$10 Non-Members



**March 2, 2024: “History & Records of the German Aid Societies (PA, SC, MD, NY)” presented by Debra Hoffman.** German Aid societies helped German-speaking immigrants address grievances and acclimate to their new home in the US. Learn about the social and economic factors that led to the founding of these societies as well as the history of the four major societies and the types of records available to researchers.

**April 6, 2024: “Shattering the Glass Wall: Solving Genealogical Conundrums for Female Ancestors” presented by Gena Philibert-Ortega.** Gena will examine common causes for elusive “brick wall” female ancestors. She will explain how to analyze the most puzzling of genealogical problems and describe strategies and techniques especially useful for identifying those who are often our most elusive ancestors.



*Both programs will be recorded for 30 day BCGS member access*

**For complete information and registration visit  
<https://www.bucksgen.org/index.php/bcgs-programs>**

\*\*\*\*\*



Joel Weintraub spoke to our Society about the 1950 Census before it was released in 2022. He is an expert on such records. Joel recently posted this message on JewishGen. Might be helpful to you.

I have recently put online three YouTube videos I think will be of interest to 'Genners. They are:

**1. A Rat Ate My Family's Manifest 27:25**

**<https://youtu.be/exK3GOOTzls>**

Subtitle: I have their ship manifest, but they are not on it! Using the first 3 letters of the surname, and the 3 children's ages and sexes, I find the "missing" family manifest at Ellis Island.

**2. U.S. Naturalization: Processes, Denials & Immigration Scams 39:19**

**<https://youtu.be/EgA-jmupKSA>**

What is Naturalization; Finding Naturalization records; Declaration of Intention; Getting a Certificate of Arrival; Manifest Annotations; Witness legal steps & why the infamous Charles Ponzi's witnesses' statements caused him to withdraw his Naturalization papers; the Petition; Women & Naturalization laws & Repatriations. Two cases of denial of the Petition. Finally, I document swindles involving the ship manifest at Ellis Island. If you have a relative whose name was lined off the manifest yet still arrived in America from that voyage, or went mysteriously from steerage to first class, it might be a product of an early 1920s swindle.

**3. Immigrant Names & Manifest Searches 1:20:14**

**<https://youtu.be/vy98KS-gaK8>**

Changing names or spelling and manifest searches. I concentrate on how Certificate of Arrival (C/A) requests were managed by the Naturalization Bureau in the 1920s. I show the viewer, with two examples, how one applies for the C/A. I then discuss the spellings of immigrant names, and how they affect manifest searches. With a sample of over 40 immigrants using multiple names (or spellings) from online C/A applications, the viewer will see, in the immigrants' own words, why they used those names (mostly their given (first) names). Applications where the Immigration Service could not, initially, verify the port/ship/date of arrival are shown with their solutions. C/A applications are also shown of a person arriving under another person's name and the naturalization consequences, and an individual arriving under his mother's maiden name (unknown to him). I end with an example where an immigrant in 1927 sued Ellis Island who told him he could not be found on his stated ship's manifest (he did) and then would not let his agent look at the manifest.

Spread the word.

Thanks, enjoy!

Joel Weintraub

Dana Point CA

**<https://www.youtube.com/c/JDWTalks>**

\*\*\*\*\*

**GET HELP WITH RESEARCH CHALLENGES!**

#JGS-IAJGS

Do you have a confounding brick wall in your family history?



Sometimes it helps to review what you know with others who are working with similar records, places, and time periods. With that kind of teamwork, you can be back to climbing your family tree in no time.

Many Jewish genealogy societies hold both virtual and in-person meetings. Visit our member page to find a group that meets your needs.

<https://www.iajgs.org/membership/member-societies/>

Emily Garber Director, IAJGS

\*\*\*\*\*

### American Ancestors.org

Whether you are beginning to research your family's history or are a seasoned genealogist, you'll constantly be finding yourself asking questions.

"What's a good source to find the name I'm looking for?"

"How can I navigate this database to make it useful to me?"

"What does this term mean?"

Our expert family historians are here to answer these questions and more! Our **free Ask a Genealogist live chat** is available every week, Tuesday-Saturday.

One of our genealogists will quickly respond to help with your brief inquiries about:

How to use a particular website or resource

Local history

Unfamiliar terms or phrases in a record

Recommendations for where to find records.

Chat with a Genealogist

\*\*\*\*\*

**There are MANY programs from other societies.** These sites are my favorite for comprehensive information. I have decided to cut back on the number of programs that I personally post. If you come across something you think is relevant to us, please let me know. Also, you can share on Facebook too!

See <https://conferencekeeper.org/> for a calendar of Genealogical events.

<https://conferencekeeper.org/calendar/>

See <https://www.bucksgen.org/index.php/bcgs-programs>

Sign up for Newsletters too: JewishGen.org Discussion Group - Daily Summary <https://groups.jewish-gen.org/g/main> and Eastman's online genealogy newsletter [Eogn.com](http://Eogn.com).

\*\*\*\*\*

## Condolences

*If you know of the illness or passing of a past or current member, please email a link of the obituary or provide the information for me to share. Disclaimer: The purpose of our group is to help foster research, education, collect family records and family connections. No political comments or advertising for services or merchandise are permitted.*

